

SPRING 25

# PARISH MATTERS



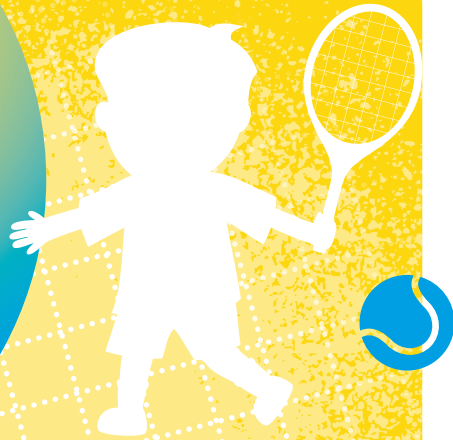
ST MARY'S  
CHURCH  
MERTON

FOR BOYS & GIRLS 3-16 YEARS



# EASTER CAMPS

MON 7<sup>TH</sup> – THURS 11<sup>TH</sup> APRIL  
& MON 14<sup>TH</sup> – THURS 17<sup>TH</sup> APRIL



## 1:8 COACH/PLAYER RATIO

Learn new skills & make new friends

### TIMETABLE

#### Main Camp (Year 1 to Year 9)

Full day sessions only

|                |            |        |
|----------------|------------|--------|
| Full day       | 9am-3.30pm | £57.50 |
| Early drop off | 8-9am      | £8     |
| Late stay      | 3.30-5pm   | £12    |

#### Tots Tennis Camp (ages 3 & 4)

For players in nursery & reception

|             |              |
|-------------|--------------|
| 8.15 – 9am  | £12.50 / day |
| 12.15 – 1pm | £12.50 / day |

**Spaces are limited so, to avoid disappointment, please book early and online: [booking.wiltontennisclub.co.uk](http://booking.wiltontennisclub.co.uk) [coachingadmin@wiltontennisclub.co.uk](mailto:coachingadmin@wiltontennisclub.co.uk) 07938 545692**

Coaching at Wilton Tennis Club is contracted to 'Wilton Coaching Ltd.'  
All lead coaches hold a LTA/PTR qualification and are first aid trained. All staff over 16 are DBS checked.



# PARISH MATTERS

SPRING 25

Spring is the season of renewal and so it's particularly fitting that Easter falls at this time. St Mary's will be packed on Easter morning, but an even more dramatic service takes place the previous evening— see page 6.

Many of our readers – as well as around 23 bird species and myriad insects – enjoy the green oasis of our Glebe Fields, but they're just one aspect of St Mary's commitment to be more sustainable. Find out what else we're doing to lessen our environmental impact on page 2.

Local charity Christian Care Merton provides desperately needed support to struggling local families. On page 10 CEO Jenny Clayton describes the wide range of services its amazing volunteers provide.

St Mary's flourishing musical life continues with an organ recital by Derby Cathedral's Alexander Binns on 10 April. And looking further ahead, St Mary's Summer Fair returns on Saturday 21 June. See page 11.

Finally, another date for your diary - Parish Players' May play 'The Ghost Train' by Arnold Ridley (aka Dad's Army's Private Godfrey) runs from 15–17 May in the Parish Hall. More details at [parishplayers.net](http://parishplayers.net).

David Reeves, Editor

St Mary's Church is open daily 9am–4pm and Sundays 7.30am–7.30pm

Vicar: The Revd John Hayward 020 8543 6192 [vicar@stmarysmerton.org.uk](mailto:vicar@stmarysmerton.org.uk)

Parish Office: 020 8542 1760 [office@stmarysmerton.org.uk](mailto:office@stmarysmerton.org.uk)

Parish Hall Bookings: Laura Crosby 020 8543 4777

[bookthehall@stmarysmerton.org.uk](mailto:bookthehall@stmarysmerton.org.uk)

Editorial: [office@stmarysmerton.org.uk](mailto:office@stmarysmerton.org.uk)

Advertising: [debraswsavvy@gmail.com](mailto:debraswsavvy@gmail.com)

St Mary's Church Merton, Church Path, Merton Park, London SW19 3HJ  
[www.stmarysmerton.org.uk](http://www.stmarysmerton.org.uk) Registered Charity Number 1134108







Image by Mark Baird from Pixabay

# Towards a greener St Mary's

Simon Hillson and Judith Bersweden review the progress your parish church is making in becoming ever more sustainable.

**'... our common home is like a sister with whom we share our life and a beautiful mother who opens her arms to embrace us'**

*Extract from 'Laudato si' – Pope Francis*

There's an increasing awareness that, unless we rediscover the beauty and wonder of the planet whose life sustains our life, the future of humanity looks bleak.

Pope Francis, in his encyclical *Laudato si*, reminded us of the 'relationship of mutual responsibility between human beings and nature. Each community can take from the bounty of the earth whatever it needs for subsistence, but it also has the duty to protect the earth and to ensure its fruitfulness for coming generations'.

The marked degradation of the environment over the past century has brought this responsibility to the top of the agenda of churches globally, and in 2020 the General Synod of the Church of England set a target for all parts of the Church, including parishes, to reach net zero carbon emissions by 2030.

Here at St Mary's, the Parochial Church Council passed a formal resolution in 2022 committing to the Anglican fifth 'mark of mission' –

**'To strive to safeguard the integrity of creation and sustain and renew the life of the earth**

in all our activities, and to year on year reductions in carbon emissions in light of the 2030 target'.

We have an 'Eco Church Group' which monitors our progress towards that target and more generally has the task of reflecting on how, as a Christian community,

together and individually and in families, we can be encouraged to do more to care for the environment.

In 2020 St Mary's was awarded the bronze Eco Church award established by the Christian environmental charity A Rocha UK. This scheme provides a framework to support local churches in taking practical action to care for God's earth, through five key areas of church life:



- **Worship and teaching**
- **The care of buildings** (the church, hall and vicarage)
- **Looking after church land** (the glebe field and the churchyard)
- **Engaging** with the local community and in global campaigns
- **Encouraging congregation members** to adopt a more environmentally sustainable lifestyle.

In and alongside this scheme, we are of course presented with a major challenge in the management, especially the heating and lighting, of our medieval church building, beautiful and much-loved as it is, and of our hall, constructed before there was much awareness of the importance of insulation and energy conservation. A number of measures have already been taken, including the increasing use of low energy light bulbs, recycling and limiting waste wherever possible, and as part of the recent refurbishment in the hall, renewing and increasing its insulation. We have begun to use the Church of England's 'energy footprint tool' to help us assess how to reduce St Mary's carbon footprint. This will enable us to formulate a plan to move us towards the 2030 net zero target, taking



Judy

Wimbledon, Mitcham & Morden

bluebird care®

Making your mum feel special. And you.



We're here so your loved one can stay home, where they want to be. Where things are safe and familiar and they have the best chance to live a full and meaningful life.

Whether it's everyday companionship or everyday errands, 24 hour Live-in Care or 30 minute Home Care visits, our highly-trained Care Experts will give your loved one the support they need to live in the place they feel best: home.

See how we can support you.

It's good to be home

Call us for a friendly chat on

020 868 75745

Email

merton@bluebirdcare.co.uk

Find out more



account of the resources available to us. Since carbon emissions cannot be eliminated altogether, there remains the possibility of off-setting (for example, by making payments through recognised organisations to support projects which reduce emissions, either in the UK or abroad).

As well as challenges we have some great opportunities in particular those afforded by St Mary's churchyard and glebe field. These beautiful natural spaces provide local residents and visitors with a place for quiet recreation, and are maintained by two groups of dedicated volunteers on sustainable and wildlife-friendly principles.

We are aiming to encourage greater biodiversity in the churchyard and glebe in order to nurture their bird, bat and insect populations. In addition, parts of the glebe are being left unmown through the summer, and we've planted a variety of native saplings. A local birdwatcher recorded 23 different species in these areas during January alone, highlighting what a precious habitat it is.

Other initiatives include:

The St Mary's Occasional Walking Group provides an opportunity for local people to get out and 'enjoy God's earth in our local area'. Every six weeks or so we organise a walk, open to all and reached by public transport. See page 19 for one of our walks in Surrey.

Pewsheet eco tips. To encourage environmentally sensitive lifestyle choices, our Sunday pewsheet, distributed at every service and available at the back of the church, often features simple 'eco tips' (see a few examples in the box on the right).

Fairtrade. Once a month (usually on the third Sunday), we run a stall in the Hall after church (about 10:45 am), offering Fairtrade and environmentally sustainable products for sale.

There is much more to be done but, in common with churches throughout the country, St Mary's seeks to play its part in the Christian call to 'sustain and renew the life of the earth'.

ECO TIPS



COSMETIC ITEMS (lipstick, mascara, makeup containers etc) are collected and recycled by Boots into construction boards for the building industry. Boots has a recycling point at the Colliers Wood store, and guarantees nothing goes to landfill or is incinerated.



BE CREATIVE with your wrapping paper! Try using old car atlases, brown paper, glossy magazines, fabric etc to give a unique, environmentally friendly and very personal touch to your gifts.



LOOSE LEAF TEA is the best option for the planet, but if it has to be bags please choose those that can be added to your food or compost. PG Tips, Yorkshire tea, Co-op, Asda, Sainsbury's and Tesco own brands are all now plant-based.



# The Holy Saturday Vigil & Easter Fire

Vicar John Hayward describes one of the great dramatic services, held each Easter at St Mary's

## Holy Week Services

### Palm Sunday. 13 April

9.40am. Blessing of palms in the Parish Hall  
10am. Sung Eucharist in church with dramatic reading

### Eucharist with homily and hymns

Monday 14, Tuesday 15, Wednesday 16 April. 7.30pm

### Maundy Thursday. 17 April

7.30pm. Sung Eucharist with washing of feet and Vigil

### Good Friday. 18 April

12pm. Devotions with recorded music of The Passion  
1pm. Service at the Cross: hymns, readings, sermon  
2pm. The Good Friday Liturgy

### Easter Eve. Saturday 19 April

7.30pm. The Easter Vigil – from Darkness to Light. Easter Fire, renewal of baptism promises and joyful music

### Easter Sunday. 20 April

8am. Said Eucharist  
10am. Sung Eucharist of Easter Day, followed by Easter egg hunt in the vicarage garden  
6.30pm. Choral Evensong and Easter anthem

It's said the ancient Egyptians lit huge bonfires to drive winter away and welcome the sun. In the 5th century St Patrick courageously defied the Irish King of Tara who forbade bonfires until after his pagan spring festival had started and lit his own, with which the Celtic tradition of Christian Easter bonfires began.

The night before Easter Sunday on Holy Saturday – this year 19 April – we keep the Easter Vigil starting at 7.30pm. A richly colourful service full of symbolism and drama starts the celebration of the Resurrection. It begins in darkness retelling creation, the cry of freedom to sets God's people free, culminating, from Exodus, in a song celebrating how 'the Lord has won a glorious victory'.

I've never spoken to anyone who's attended for the first time and not remarked what a wonderful experience it was, lamenting that they hadn't been before. I commend it to you!

After the sun has set, the Paschal (Easter) Candle is inscribed with a cross, the current year and the letters 'Alpha' and 'Omega' (first and last in Greek) just before it is lit from a contained bonfire set alight in the churchyard.

Then carried into the darkened church it is lifted high as a cantor intones 'The Light of Christ'. The people's candles are lit from it, gradually spreading light to fill the church. In a central place of honour, an ancient prayer of praise, the Exsultet is sung around the Candle, recording the mighty acts of God in redeeming the world and heralding the Light of the Resurrection.

The church explodes with sound as the Gloria is sung, the organ thunders and bells peal forth, leading to the first Biblical readings of Easter. There is much more to discover in the Easter Vigil as I hope you will discover this year, perhaps for the first time.

## Maundy Thursday

### Thursday 17 April 7.30pm

Commemorating The Last Supper. The wafer and wine used on Sundays throughout the year are replaced with ordinary bread and local wine. During the service the Vicar washes the feet of several parishioners in remembrance of Christ washing the feet of his disciples. The service ends with the altar being stripped back to a simple table, ornaments removed, in preparation for Good Friday. A three hour vigil follows the service until midnight.

## Good Friday

### Friday 18 April 12pm to 3pm

This service takes place as the Church recalls the hours of darkness after Jesus' death on the Cross. It is divided into three sections:

**12pm–1pm.** Reflection on Christ's Crucifixion while listening to recordings of music on the theme of The Passion of Our Lord.

**1pm–2pm.** The Service at the Cross: reading, hymns, prayers and sermon

**2pm–3pm.** The Good Friday Liturgy – telling the story and reflecting on what happened on the first Good Friday.

## Easter Eve

### Saturday 19 April 7.30pm

The first service of Easter, The Easter Vigil takes place on the evening before Easter Day with the church in darkness and with the lighting of the Paschal Candle. The church is then brightly lit and joyful music is sung by the choir and congregation who also renew the promises made at their baptism.

## Easter Day

### Sunday 20 April. 8am, 10am, 6.30pm

A said communion service at 8am followed by family communion at 10am. After this service children are invited to go on an Easter egg hunt in the vicarage garden next to the church. The final service is Choral Evensong with special music for Easter Day.





## Our Vicar, John Hayward, announces his retirement after 17 years in the parish.

The Vicar of St Mary's Merton, John Hayward, has announced that he will be retiring in the summer and his last Sunday services will be on Sunday 6 July.

John says: "When that moment comes it will be a huge wrench to move on from here, where we have been, and remain, very happy to have lived and worked for very nearly 17 years."

John is the 29th Vicar of Merton and his successor will be appointed in due course. An article reflecting on John's time in the Parish will appear in the next edition of Parish Matters.



**A DATE FOR YOUR DIARY,  
NOT TO BE MISSED...**

## Organ Recital by Alexander Binns

Director of Music at Derby Cathedral

**THURSDAY 10 APRIL 2025 7.30PM  
IN ST MARY'S CHURCH**

**TICKETS £15 ON THE DOOR  
INTERVAL REFRESHMENTS**

**SEE PAGE 13 FOR DETAILS**

MARCH  
APRIL  
MAY

WHAT'S ON

SPRING 2025

Regular church services  
see page 28

Sunday Club  
see page 28

Children First Eucharist  
see page 28

Parish Matters is distributed to 3250 homes in the parish of St Mary's, Merton, thanks to a goodly number of volunteer deliverers.

A different member of the editorial team edits each issue. We welcome your feedback.

Spring issue copy deadline: 2 May

Editorial office@stmarysmerton.org.uk

Advertising debraswsavvy@gmail.com

Design amanda@fourberrys.co.uk

Proofreading Adrian Berry

Delivery coordinators John and Judy Sargeant

Print Impress Print

**Children First Eucharists** (45 mins)  
Sundays at 9.30am: 16 March; 18 May; 15 June.

**Mothering Sunday service with blessed flowers and simnel cake.** Sunday 30 March 10.00am

**The Bishops of Southwark and Kingston visit the parish**  
Sundays 9.30am 6 April and 4 May respectively, to preside and preach.

**Organ recital by Alexander Binns of Derby Cathedral**  
Thurs 10 April 7.30pm. Tickets £15 on door. Refreshments.

**Holy Week and Easter services.** See page 7.

**John Innes Society AGM**  
Thurs 24 April 8pm. Merton Park Primary School. Speaker Neaz Ahmed, Muslim Women of Merton's Community Garden.

**Parish Players presents 'The Ghost Train' by Arnold Ridley**  
St Mary's Parish Hall. Thurs 15, Fri 16, Sat 17 May 7.45pm

**John Innes Society spring plant sale**  
Saturday 17 May 10am–12noon. 5A Sheridan Road

**Annual Church Meeting**  
Sunday 18 May 10.45am. Reports [www.stmarysmerton.org.uk](http://www.stmarysmerton.org.uk)

**Ascension Day. Sung Eucharist with the choir**  
Thursday 29 May 7.30pm

**Sunday walks from the church**  
6 April; 1 June; 13 July 10.30am (check pew sheet to confirm dates). Short walks up to 6 miles involving public transport.

**Summer Fair returns in the glebe fields and hall**  
Saturday 21 June, 12pm–6 pm

**Opera Arias Concert. Harriet Burns, Ian Tindale, Michael Bell**  
Thurs 3 July 7.30pm. Tickets £15 on the door. Refreshments.

**Final services and farewell to the Vicar and Roger**  
Sunday 6 July: 8am/9.30am/6.30pm

**Fellowship lunches 12 for 12.30pm**  
See page 26

## Help for struggling families in our community

### Richard Price talks to Jenny Clayton, CEO of local charity Christian Care Merton

Jenny Clayton is rightly proud of Christian Care's heritage – helping families in need in the London Borough of Merton for almost 60 years since being formed by Bert Hyde in 1967, the outcome of an ecumenical Lent group. She has been CEO for a year, coming to the charity having previously worked for 'Churches Together' in Essex and East London, and being a volunteer for a similar project in Essex.

Christian Care is an independent registered charity supported by all church denominations in the borough, a wide range of individual donors and grants from small family trusts. The charity is governed by a board of seven trustees.

Christian Care has a simple objective – to provide practical and emotional support to anyone, especially families in need, regardless of ethnic origin or religion. Reasons why families come to Christian Care range from those who are homeless or in poor accommodation, people with limited resources as asylum seekers or refugees, to families trying to cope with the effects of

domestic abuse or being overwhelmed by the pressures of bringing up young children. These latter families are now being offered a six-week parenting course in association with 'Kids Matter' who run similar successful courses in other parts of London.

Referrals come from the local authority, food banks, teachers, midwives and GPs and result in support for around 100 families each year. Some benefit from a befriending service, which matches a volunteer with a family who visit once a month and builds up a valued relationship. Some volunteers often refer to client families as their 'second family', developing a sustained long-term relationship.

Christian Care's practical support relies on donations from supporters. The charity welcomes donations of beds, chests of drawers, wardrobes, sofas, dining room tables and bedding as well as cutlery, cups, plates and bowls. Items are collected using the charity's van. The furniture project team operates at least once a week and every fortnight a team of volunteers meets to sort out bedding, curtains and other requirements. A DIY team of volunteers also helps, among other tasks, to move and assemble furniture, and fit curtain rails.



Each Christmas the charity supplies hampers and presents for children, and in the summer they are invited to spend a day at the seaside in Littlehampton. Many of the children have never seen the sea before and each year the level of excitement produces its own reward for those who organise and attend the event.

Christian Care has about 60 volunteers, some helping each week, and others on an ad hoc basis. More volunteers are always needed and Jenny is keen to widen the net and encourage more people to become involved. There are opportunities to be a 'Befriender' or to be part of the Bedding Project team that allocates resources, or to help drive the van to collect and deliver household goods, or to help assemble furniture. Or perhaps you might be interested in joining the administrative team in the office or working from home.

Jenny is currently seeking a volunteer who can act as a volunteer co-ordinator, handling all the paperwork that is needed to support the work of other volunteers.

**To find out more go to Christian Care's website: [www.christiancaremerton.org.uk](http://www.christiancaremerton.org.uk) email [christiancaremerton@gmail.com](mailto:christiancaremerton@gmail.com)**





**ELLIOTT  
LANDSCAPES**

**07979 806 123**

**Professional Landscape Gardening  
Garden and Property Maintenance Services**

**Maintenance  
Design and Planting Schemes  
Landscaping  
Patios and Driveways  
Fencing and Gates  
Turbing and Lawn Care  
Hedges and Trees  
Stump Grinding  
Property Services**

Call **07979 806123**  
Email: [info@elliottlandscapes.co.uk](mailto:info@elliottlandscapes.co.uk)  
[www.elliottlandscapes.co.uk](http://www.elliottlandscapes.co.uk)



**GSB Wimbledon**

Contact: Glenn Smith

Email: [glennsmithpm@icloud.com](mailto:glennsmithpm@icloud.com)

**07768 113755**

**Property Refurbishment,  
Maintenance & Repairs**

**General Building**



**green  
industree**



**Professional Tree Services**

Pruning, Felling, Reports & Advice

**Family run, local business with  
over 20 years experience.**

**Safe, efficient and cost effective  
solutions for all your tree needs.**

**INSURED • TRAINED • QUALIFIED**

**call for a  
free site visit**

**07514 280460 020 3581 1569**

[charles@greenindustree.co.uk](mailto:charles@greenindustree.co.uk)  
[greenindustree.co.uk](http://greenindustree.co.uk)



**Bring your mind  
and your body  
back to life**



— THE —  
**PILATES**  
— CLINIC —

Private or semi-privates for two, or small group reformer classes, in our gorgeous Pilates studio in Wimbledon. Or online group or private sessions from the comfort of your own home. We give you space and tools to learn to move intelligently and thoughtfully, reaping the benefits of Pilates.

[www.thepilatesclinic.com](http://www.thepilatesclinic.com)  
3 Red Studio, Elm Grove, SW19 4BX  
07961 495 297



**MUSIC MATTERS**

## St Mary's Choristers Christmas Concert

An outstanding performance of Benjamin Britten's Ceremony of Carols. Under the musical direction of Tristan Weymes, the choristers showed their versatility in tackling Britten's complex harmonies in the eleven contrasting movements. They were supported by the Gaia Singers and the harpist Anwen Mai Thomas. Special mention goes to the six soloists – Sophie Bisson, Ellie Roberts, Zoe Donovan, Ava Renton, Chloe Ellam and Rebecca Ellam – who all gave assured performances which helped to enhance this memorable occasion.

## At St Mary's music really does matter!

Here are two concert dates for your diary...

### Organ Recital

On Thursday 10 April, Alexander Binns will be giving an organ recital which will demonstrate the power and versatility of St Mary's organ. His programme will include music from the 16th century, works by Bach, Widor and Cesar Frank, an arrangement of a well-known spiritual and music composed for the Coronation of King Charles III.

Alexander is currently Director of Music at Derby Cathedral. He is looking forward to returning to St Mary's where he spent several months as interim organist in 2011. He graduated with distinction from the Royal Academy of Music and last year was awarded an Associateship of the Royal Academy, an award bestowed on former Academy students who have made a significant contribution to the musical landscape.

See page 8 for concert details.

### Opera Arias Concert

Thursday 3 July

Old friends of St Mary's, soprano Harriet Burns and pianist Ian Tindale, will be joined by tenor Michael Bell to perform a programme of opera arias by Mozart, Handel, Verdi and Donizetti.

Look out for more details at [www.stmarysmerton.org.uk](http://www.stmarysmerton.org.uk) and on [instagram.com/stmarysmerton](https://www.instagram.com/stmarysmerton) and on church noticeboards nearer the time.



Cleanki/



House mice...  
Wasps in the wisteria  
Pigeons in the parlour  
Ants in the attic  
Squirrels in the shed  
Rats in the summerhouse  
Cockroaches in the cellar

Award-winning  
pest control services

0800 056 5477  
info@cleankill.co.uk



cleankill.co.uk

# St Mary's Mid-Summer Fair ...is ON!

Come  
and enjoy  
the fun

Saturday  
21 June  
2pm – 6pm

In St Mary's Glebe  
Field and Parish Hall,  
Church Path,  
Merton Park

FAMILY ENTERTAINMENT & FUN & GAMES

PLANT SALES & TRADITIONAL STALLS

FOOD & LICENSED BAR



## WA TRUELOVE & SON LTD

INDEPENDENT FAMILY FUNERAL DIRECTORS  
& MONUMENTAL CRAFTSMEN SINCE 1885



Serving the local community

- 24 hour call out service
- Home visits available
- Horse-drawn funerals
- Monumental masonry
- International repatriation
- Pre-paid Funeral Plans



MORDEN 020 8540 6667

254 Martin Way SM4 4AW  
morden@watltd.co.uk



See our website [www.watltd.co.uk](http://www.watltd.co.uk) or scan this QR code

## Fun and fundraising

The peace and quiet normally experienced in Church Path was interrupted in December by local (and not so local) residents enjoying the St Mary's Christmas Market. We were blessed with good weather, and it was a great success all round.



In the church, locally made Christmas wreaths were on sale, alongside the ever-popular toy, book and bottle stalls. A short walk through the vicarage garden – where mulled wine and many mince pies were enjoyed

– took visitors to the parish hall. Here there were many other stalls, an opportunity to meet up with friends and to enjoy tea and cakes. In total we raised more than £6,000 for church funds and St Mary's charities including Faith in Action's Homeless Drop-in, Christian Care Merton and Mercy Ships.

Building on this success, the St Mary's Summer Fair will be held again in the glebe field and parish hall on Saturday 21 June from 2pm to 6pm. There will be something for everyone, including music, food stalls and lots of fun and games. This year's coordinator Roger Birtles is building a team of volunteers to plan, organise and help on the day. If you'd like to get involved or have some ideas to share, please get in touch with Roger on [roger@simply-planning.com](mailto:roger@simply-planning.com)

**Put the date in your diary now!**



| ESTABLISHED LOCALLY OVER 30 YEARS |  
**K.D. RAYNSFORD**  
 | LANDSCAPE GARDENING AND BUILDING |



Paving, patios, brickwork, garden walls / Fencing, trellis and decking / Lawns and artificial grass  
 Tree pruning and garden tidy up / Patio cleaning and waste removal / Painting and decorating  
 Kitchen and bathrooms fitted / Guttering, roof repairs / Complete renovations to small repairs

**Call 0800 2 118 618 / Mobile 07946 338 456**  
 Free estimates and friendly advice

**PIZZA**  
**euforia**

25 years delivering  
 the best authentic  
 wood-fired pizzas

VIEW OUR MENU  
 ORDER ONLINE  
 BOOK A TABLE



[www.pizzaeuforia.co.uk](http://www.pizzaeuforia.co.uk)  
 10 Merton Park Parade SW19 3NT 020 8545 0106

Thursday Classes at  
 St Mary's Church Hall  
 BOOK TODAY FOR  
**YOUR FREE TRIAL**



Your baby was born to love music...  
 Try our award winning classes for babies from 3 months

Contact Lucy  
[wimbledon.merton@monkeymusic.co.uk](mailto:wimbledon.merton@monkeymusic.co.uk)  
 020 8543 4525  
[www.monkeymusic.co.uk](http://www.monkeymusic.co.uk)

Nurturing a lifetime of music  
[www.monkeymusic.co.uk](http://www.monkeymusic.co.uk)

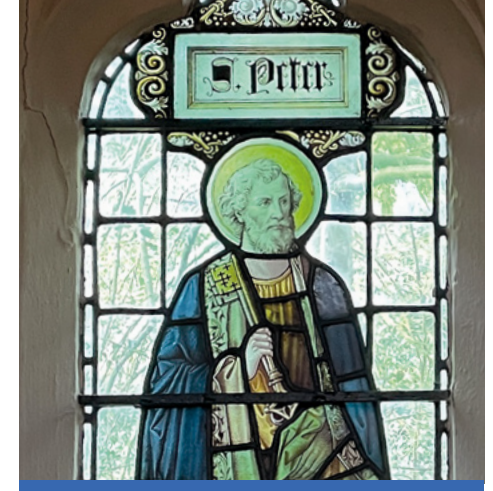


## The St Peter window

In the fifth in our series of short articles on the stained glass windows in the church, Simon Hillson looks at St Peter.

The pair of windows which includes one depicting St Peter is in a markedly different style from the others in the north aisle of St Mary's Church. It is one of several memorials in the church to the Revd E.M. Robinson who, Vicar since 1899, tragically took his own life on Easter Day 1904 after a period of illness. The scriptural quotation at the bottom of the window is one quoted by him in his last sermon preached at St Mary's. His widow, a daughter of the Scottish shipping magnate, John Burns, first Lord Inverclyde, remarried a couple of years later and became a prominent figure in Berkshire in later life, amongst other positions serving as the first female mayor of Wokingham. It was her sisters who donated the window, which was dedicated on All Saints Day 1904. In 1944 it suffered bomb damage which was repaired, although the War Damage Commission declined to pay for the restoration of the original coloured background, which was replaced with the plain glass we see today.

Throughout the New Testament Peter, one of the first of the disciples to follow Jesus, and the one whom he called the rock on whom he would build his church, appears as a leading figure in the early Christian movement. With James and John, he was one of the exclusive group of disciples to witness the raising of Jairus's daughter, the Transfiguration, and the agony in the garden before Jesus's arrest. After the Resurrection he received special individual instructions from Jesus. It was he who insisted on the selection of a replacement for Judas



Iscairiot, addressed the crowd at Pentecost, performed miracles in Jesus's name, admitted the first gentile to baptism, and travelled widely on missionary and pastoral visits.

Yet this 'Prince of the Apostles', as he is sometimes called, is perhaps the one to whom it is easiest to relate on a human level. Warm, impulsive, strong-willed and courageous – he died a martyr for his faith in Rome under Nero in about 64AD. After Jesus's arrest he nevertheless gave way to a fear which we can all too readily recognise in ourselves, three times denying that he knew Jesus. Perhaps this is the reason, as much as his leading role in the early Church that, from the beginning, the dedication of churches to St Peter was so widespread.

In the next issue, learn more about the workings of St Mary's bells, and what it takes to keep them ringing out across the parish.

Some essential maintenance work is planned for the coming months for which we will be fundraising. There will be more about this in the summer magazine.



# HALE HAIR BOUTIQUE

## SPRING INTO GORGEOUS HAIR!

SHAKE OFF WINTER AND STEP INTO SPRING  
WITH A FRESH NEW LOOK AT HALE HAIR BOUTIQUE!



BRIGHTEN UP WITH EXPERT HIGHLIGHTS & REDKEN COLOURS  
RESTORE SHINE & STRENGTH WITH OUR LUXE TREATMENTS  
FRESH CUTS FOR A NEW SEASON REFRESH

BOOK YOUR APPOINTMENT TODAY, BECAUSE  
GREAT HAIR IS ALWAYS IN SEASON!

### BOOK ONLINE AT

halehairboutique.com or call 020 8540 1632  
Follow us for updates @halehairboutique

### FIND US

Opposite the Nelson Hospital  
11 Merton Park Parade SW19 3NT

Follow us for updates @halehairboutique



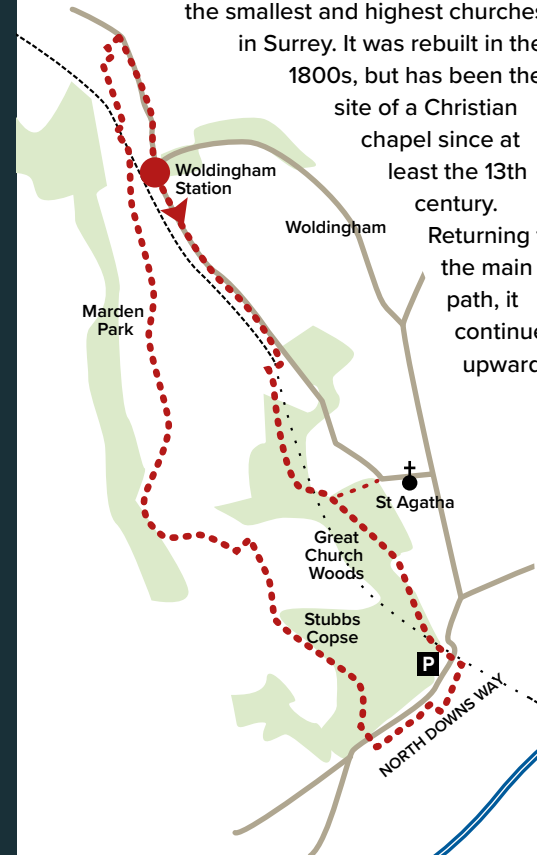
## Woldingham circuit

Simon Hillson takes us into the beautiful Surrey countryside

The village of Woldingham feels as if it is in the depths of the countryside, and yet is less than half an hour's train journey from Clapham Junction, with a service every 30 minutes. A pleasant walk, just over five miles in length, starts at Woldingham station, following a track south which runs adjacent to the railway to reach woodland where the railway passes into a tunnel. The path climbs gently and after a while there is the option to take a short detour to the left

to visit the church of St Agatha, one of the smallest and highest churches in Surrey. It was rebuilt in the 1800s, but has been the site of a Christian chapel since at least the 13th century.

Returning to the main path, it continues upwards



The church of St Agatha, Woldingham

to reach a quiet lane and the North Downs Way, which here runs along the ridge at the top of the North Downs escarpment. There are marvellous views south across the M25 into the Weald, although sadly there is much evidence here of damage to trees caused by Ash Dieback.

Turn right along the North Downs Way for a while (the path runs below and parallel to the lane) and then, before a fork in the road, take a path off to the right. A gentle descent now begins through Stubbs Copse and Marden Park, skirting the grounds of Woldingham School, one of the country's most prominent schools for girls. The manor house, now occupied by the school, was rebuilt in about 1880 after the previous building was destroyed by fire. Continue along the tarmacked lane which runs between pleasant fields before crossing the railway line and then cut right along a short stretch of footpath to meet Woldingham Road. Turn right again to return to the station, but before doing so perhaps cross the road for a cup of tea at the charming outdoor terrace of the Dene Coffee Shop adjoining Knights Garden Centre.



Alpha Decor

Transform your home  
Reasonable rates

Painting & decorating

Interior and exterior  
Dry lining  
Doors and windows

Installation

Laminate flooring  
Shower and bath screens  
Skirting, architrave, coving  
Shelving  
Blinds and curtains  
Door handles  
Mirrors and picture hanging

At Alpha Decor we ensure every project is carried out to the highest standard. Experience the difference of a professionally transformed space.

www.alphadecor.co.uk 07926-768835 or email: anthony@alphadecor.co.uk



"If you're searching for the true essence of Indian cuisine, Bombay Delight is your destination. Indulge in the rich, vibrant flavours of India, crafted to perfection—an experience not to be missed!

OPEN 7 DAYS A WEEK | 271-273 THE BROADWAY, Wimbledon, SW19 1SD  
+44 20 4568 6294 | bombaydelight.co.uk



PARISHPEOPLE

Laura Crosby

David Reeves meets our hall administrator



St Mary's Parish Hall has long been at the heart of the Merton Park community, with local and national groups catering for all ages and interests coming through its doors every week. It's been part of the lives of generations of families marking anniversaries, birthdays, weddings and wakes. Regular hirers include Scout groups, Reflect Drama, Monkey Music, Parish Players and a wide variety of local classes such as zumba, dancing and pilates.

But the hall couldn't function as smoothly as it does without the hard work and dedication of hall administrator Laura Crosby, who has recently completed ten years in the role. With a previous background in nursery management and childcare, Laura has been instrumental in building and maintaining a loyal set of hirers, making a real difference to St Mary's regular income.

Every user can be confident that the hall's various facilities will be warm, clean and tidy but it's the 'backroom' duties that people don't think about that are equally

important for Laura. Managing the annual fire protection, security alarm and electrical safety checks, for example, ensure that the hall facilities are safe and adhere to legal requirements. There's always a need to replace worn-out or broken items (we've recently had to buy new chairs), and order regular supplies as well as respond to the thankfully rare emergency, such as a blocked dishwasher!

As both caretaker and bookings administrator, Laura is right across every aspect of hall business. She works closely with, and is a member of, the hall committee and this was particularly valuable when the hall underwent a major refurbishment in 2022, as Laura was able to liaise closely with contractors and hirers alike.

Laura is always looking for potential new hirers and she's been successful in filling gaps when they arise. She also ensures that the St Mary's website is up to date with hall information and plans to take advantage of the church's new Instagram account.

If you're interested in booking the large or small hall and the well-equipped kitchen which links to both, contact Laura at: [bookthehall@stmarysmerton.org.uk](mailto:bookthehall@stmarysmerton.org.uk) [www.stmarysmerton.org.uk](http://www.stmarysmerton.org.uk) and [instagram.com/stmarysmerton](https://www.instagram.com/stmarysmerton)

Gardens Galore!

Sharing the best in Gardening



The Gardeners Guild  
Public Liability Insurance

Sonia on 07985 521578  
[soberding2016@gmail.com](mailto:soberding2016@gmail.com)



# The Letter in The Window...

When I first saw the advert in the pharmacy window, it broke my heart. I thought, 'That could be my own mum in a few years time'.

I wasn't looking for a new career or anything, but I knew I could give someone a bit of help here and there. So, when I saw the ad, I went for it and called the number.

I spoke to a lovely lady called Sophia who filled me in on what Home Instead Wimbledon and Kingston were looking for and how they helped so many older adults. Honestly, it really didn't feel like I was talking about a job. For the first time in ages, I felt like I could really contribute something good to another person's life.

Deciding to offer a few hours of my week was a simple decision. Those few hours quickly turned into a full-time commitment. Leaving my job at the shop wasn't easy, but what I've found in return is so much better.

**Home Instead** stands out because everyone is so friendly and welcoming. The immersive training was incredible - it really felt like being in Betty's flat. It didn't just prepare me for the everyday 'tasks' I'd need to do but it helped me understand depth of care, the importance of dignity, and the value of companionship to someone's life and wellbeing.

Now, four months in, I can't imagine doing anything else. The clients I visit, the stories I hear, the smiles we share - I love it. So, to anyone who felt the same as me when they read that note in the window, I'd say, make the call.

Caring and companionship, giving back to the community, that's what life is all about.

All the best,  
*Aanya*



## Home Instead

### Richard Price finds out about the Wimbledon and Kingston franchise

Home Instead was established in 1994 in the United States by a couple who were concerned about the poor level of care provided to an ageing grandparent. They set out to provide high quality, professional care services which would enable older people to have fulfilling lives while remaining at home. Today Home Instead operates in 13 countries and has been in the UK since 2005. It is organised as a franchise operation and there are currently 265 offices in the UK.

Clare Jefferies became the owner of the Wimbledon and Kingston franchise 15 years ago, motivated by similar concerns expressed by the two founders – the very poor level of care offered to her parents. Today Clare and her husband own four franchises covering Wimbledon and Kingston, Richmond, Epsom and Sutton.

Services offered range from supporting a family for as little as two hours a week, right up to live in, and end of life care. Matching the right carer to the client is the most

important part of what they do, along with continuity of carer.

Clare employs more than 180 staff in her Wimbledon and Kingston office, most of whom work part-time (which suits many) and they are supported by 16 staff in the office, underpinning the high quality of compassionate care they deliver. Within their office, 'Betty's flat' has been created to allow new staff to go through an immersive training experience, replicating many of the scenarios they will face in a client's home. This and many other pioneering ways of supporting their staff and clients, has led Home Instead to be rated "Outstanding" by the regulator, the Care Quality Commission.

Charges for using Home Instead services start from £34.50 per hour. For further information phone 02089424137 or email [wimbledon@homeinstead.co.uk](mailto:wimbledon@homeinstead.co.uk).

As the number of ageing adults increases, Home Instead is always looking to recruit caring members of staff. If this is of interest, please do get in touch. ■

## Sudoku

|   |   |   |   |   |   |   |   |   |
|---|---|---|---|---|---|---|---|---|
|   | 6 | 7 |   |   |   | 8 |   |   |
| 3 |   |   | 6 | 4 |   | 1 | 9 |   |
|   |   |   | 3 |   | 6 |   |   |   |
| 2 | 9 |   | 8 | 1 | 4 | 7 | 3 |   |
| 1 |   |   |   |   |   |   |   | 6 |
|   | 3 | 8 | 7 | 6 | 9 |   | 2 | 1 |
|   |   | 3 |   | 8 |   |   |   |   |
|   | 2 | 1 |   | 7 | 5 |   |   | 4 |
|   |   | 9 |   |   |   | 5 | 1 |   |

Solutions on page 28



HomeInsteadWimbledonandKingston



homeinsteadwimbledon

[homeinstead.co.uk/wimbledon-kingston](http://homeinstead.co.uk/wimbledon-kingston)



# Beddington

Insurance Services Wimbledon

## If you can insure it, we can cover it

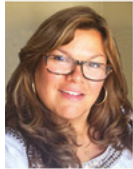
- Commercial • Residential • Tradesman's Liability • Professional Indemnity
- Travel • Retail • Shop • Surgeries • Offices • Restaurants • Wine Bars
- Hotels • Taxi • Commercial Vehicles • Fleet • Agricultural

**Independent, family run business, established in 1975**

One-to-one personal service

Always someone at the end of the phone  
Highly competitive and able to price match

**Telephone 020 8543 5181**



157A Hartfield Road, Wimbledon SW19 3TJ info@beddingtoninsurance.co.uk www.beddingtoninsurance.co.uk



## Ironing by Sue

Your local ironing service!

Reliable, quality ironing

Good turnaround times

Collection & delivery

Established 1993

References available

**07786 953748**

Suesironingservice1@hotmail.com



PROPERTY  
RENOVATION

FAMILY RUN BUSINESS  
WITH FAMILY VALUES  
ESTABLISHED SINCE 1986

- ROOFING / FACIAS / GUTTERING
- PAINTING / DECORATING / PLASTERING
- WALL / FLOOR TILING
- GENERAL PROPERTY MAINTENANCE
- GUTTER CLEANING
- CARPET CLEANING

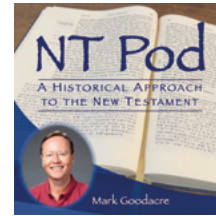
**FREE ESTIMATE. CONTACT US NOW**

**07769 771761**

**sunshineservices1@hotmail.com**



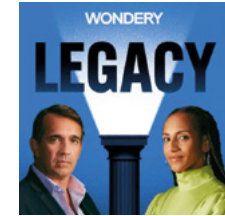
## A good listen and a good read...



### PODCAST NT Pod

The NT Pod offers a fascinating insight into current scholarship on the

New Testament and Christian origins. It is presented in a relaxed and accessible style by Mark Goodacre, a British scholar who for some years has been a professor at Duke University, North Carolina. New episodes are issued at sporadic intervals and are of varying length, but are well worth looking out for. Recent episodes have discussed various problems encountered in translations, the significance of textual variants in scriptural manuscripts, treatment of the Bible in films, and women in the Bible.



### PODCAST Legacy

This series tells the stories of extraordinary men and women, and questions whether

they have the reputation they deserve.

Co-hosts are the broadcaster and journalist Afua Hirsch and Peter Frankopan, Professor of Global History at Oxford University.

Every subject is reviewed in four episodes of around 50 minutes each. To date, they have included an eclectic mix – for example Napoleon, Cleopatra, Charles Dickens, Margaret Thatcher, John F Kennedy, Marilyn Monroe, Nina Simone and Bob Marley. They are always engaging, informative and entertaining.



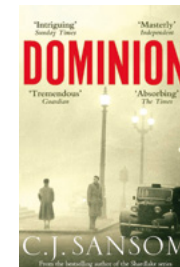
### The Spy and the Traitor Ben Macintyre

This book is a well-researched true account of a cold war story about a double agent.

But excitingly it is also

an edge of the seat thriller! With secret messages, bag drops and tense car chases, the story covers the development by British spymasters, over ten years, of Oleg Gordievsky – a senior KGB officer and spy who did more than anyone to change the course of the cold war, damaging the KGB in the process.

A story outlining the selfless bravery and courage of those involved and the complex nature of spy espionage – priceless secrets, infiltration, betrayal, trust and fear.



### Dominion CJ Sansom

In this gripping thriller, the author of the acclaimed Matthew Shardlake Tudor novels has turned his focus onto post-war Britain – but with a twist. It's 1952, and

after Britain sued for peace with Germany in 1940, the UK has become a Nazi-controlled puppet state. Churchill is a hunted criminal, leading the resistance movement.

David is a civil servant secretly supplying information to the resistance. He is sent on a dangerous mission and, with a group of fellow-resisters, is pursued across a shabby, frightened Britain by a relentless Gestapo agent. This is a real page-turner. Don't be put off by Dominion's length, you won't be able to put it down!



# PARISH TOGETHER

In addition to our services in church, St Mary's offers several activities which are open to all in our local community. You are sure to receive a warm welcome.

## What's so great about the Bible?

### Hugo Summerson invites you to join St Mary's Bible Study Group

It's the best-selling book of all time according to the Guinness Book of World Records, and it's impossible to know exactly how many copies have been printed in the roughly 1,500 years since its contents were standardised. But research suggests that the total number probably lies between five and seven billion!

In the 21st century it continues to be the world's best seller at 80 million copies sold every year, and read avidly by millions of people around the world – even in the 52 countries where to own a Bible is illegal and can be severely punished. It's a constant reminder that human nature does not change; the question of life's purpose is as old as humanity itself, and the Bible has helped many people find an answer.

We are a small friendly group which meets at 10.30am twice a month in St Mary's Parish Hall for about an hour. We start with tea and coffee and a general chat, then we look at a short Bible passage. There's no need for any sort of pre-reading or preparation, and you don't even have to own or bring a Bible. Just come along and see what it's all about. You'll be very welcome. See dates on the opposite page.



## Wednesday Club

Meeting in the parish small hall every Wednesday 2.30–4.30pm. The monthly programme includes two film sessions, an afternoon tea, quizzes and lively topic talks. Suggested donation of £5/pp, or £8/per couple/pair.

For further information contact **Barbara Moreland** 020 8542 3427  
bmoreland43@gmail.com  
**Lindsey Jones** 020 8715 6398  
lindsey6456@hotmail.co.uk



## Fellowship Lunch

Join us for an inexpensive lunch in good company – especially for those who might not cook a Sunday roast for themselves.

Sundays, 12 noon for 12.30: 23 March, 18 May, 29 June, 14 September, 2 & 30 November.

To book call **Anita Simpson** on 020 8543 3764 or 07960 324 371  
adsimpson68@yahoo.co.uk

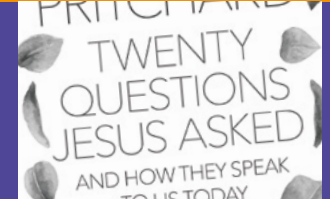


## Bible Study Group

Meeting in the parish small hall at 10.30am on some Tuesdays.

Details can be found on the white pewsheets in the church or for more information contact

**Hugo Summerson**  
07808 959869



## Pilgrim Group

The group meets on alternate Thursday evenings, and offers an opportunity for informal study, prayer and fellowship.

For further information, contact **Simon Hillson**  
simonhillson@me.com



## Book Club

Meeting monthly in different houses across the parish. About two hours.

For further information contact **John Combs**  
johncombs46@gmail.com



## Occasional singers

A friendly group who enjoy singing but are unable to make a weekly commitment to St Mary's choir. They enjoy leading the music when the choir is on holiday.

For further information, contact **Nick Roberts** at slicknickroberts@hotmail.com



## Walking Group

The Occasional Walking Group meets five or six times a year after the Sunday Parish Eucharist for short walks (maximum six miles), usually in the Surrey countryside.

For further information contact **Simon Hillson** simonhillson@me.com

## Regular Sunday Services

**8am** Said Eucharist (Book of Common Prayer, fourth Sunday of each month)

**9.30am** Sung Eucharist ('Children First Eucharist', third Sunday of each month)  
**NB.** On some Festivals the main morning service is at 10am.

**6.30pm** Evensong

**Monthly midweek Eucharist. 3rd Sunday of the month**

Third Thursday of each month. Said Eucharists 10.30am (30 mins)

**Sunday Club for children. 1st Sunday of the month**

Meet in the parish hall at 9.30 am, and joining the end of the service in church. Children 3+ welcome. Parents/carers are asked to stay with under 3s.  
 judithbersweden@stmarysmerton.org.uk

**Children First Eucharist. 3rd Sunday of the month**

A family-friendly service at 9.30am. Please check website for details, or contact judithbersweden@stmarysmerton.org.uk

## Parish Office

Open four mornings each week from 9.30am–1pm (closed Wednesdays).

Email [office@stmarysmerton.org.uk](mailto:office@stmarysmerton.org.uk)

Telephone 020 8542 1760

## Parish Hall & Glebe Field

For information about hiring the hall or field go to [www.stmarysmerton.org.uk](http://www.stmarysmerton.org.uk) and look under 'Hire the hall & glebe'. Alternatively email Laura Crosby at [bookthehall@stmarysmerton.org.uk](mailto:bookthehall@stmarysmerton.org.uk) or call on 020 8543 4777

### Sudoku Solution. Page 5

|   |   |   |   |   |   |   |   |   |
|---|---|---|---|---|---|---|---|---|
| 4 | 6 | 7 | 1 | 9 | 2 | 8 | 5 | 3 |
| 3 | 8 | 5 | 6 | 4 | 7 | 1 | 9 | 2 |
| 9 | 1 | 2 | 5 | 3 | 8 | 6 | 4 | 7 |
| 2 | 9 | 6 | 8 | 1 | 4 | 7 | 3 | 5 |
| 1 | 7 | 4 | 2 | 5 | 3 | 9 | 8 | 6 |
| 5 | 3 | 8 | 7 | 6 | 9 | 4 | 2 | 1 |
| 6 | 5 | 3 | 4 | 8 | 1 | 2 | 7 | 9 |
| 8 | 2 | 1 | 9 | 7 | 5 | 3 | 6 | 4 |
| 7 | 4 | 9 | 3 | 2 | 6 | 5 | 1 | 8 |

**St Mary's Church Merton**  
 Church Path, Merton Park,  
 London SW19 3HJ

**The church is open daily,  
 at least between 9am–4pm**

[www.stmarysmerton.org.uk](http://www.stmarysmerton.org.uk)

Registered Charity  
 Number 1134108



All the production and paper elements of this magazine have been carbon balanced

# Unlock wellness with Pharmacy First!

Experience on-the-spot diagnosis and treatment with Pharmacy First. Embrace a faster, more convenient way to prioritise your health.



Providing NHS services

## Conditions We Cover:

- ✓ Sinusitis
- ✓ Sore Throat
- ✓ Impetigo
- ✓ Shingles
- ✓ Infected Insect Bites
- ✓ Ear Infections
- ✓ Uncomplicated Urinary Tract Infections in Women



PearlChemistGroup

Talk to a professional

CALL 020 8672 2157

Visit [www.pearlchemistgroup.co.uk](http://www.pearlchemistgroup.co.uk)







# tennison



PROPERTY

SINCE 2008



We are family run and independent with a professional, friendly approach. We handle sales, lettings and management, guaranteeing customer satisfaction.

We are experts in the art of estate agency.

**EXEMPLARY SERVICE LOCAL EXPERTISE**

**020 8543 0074**

**SALES • LETTINGS • MANAGEMENT**

Tennison Property is the fastest selling agent in the area, securing the best offer for your property in 8 weeks! That's three weeks faster than any other local agent and at 100.1% of the asking price!

**As seen on [GETAGENT.CO.UK](http://GETAGENT.CO.UK)**

**LOCATED OPPOSITE WIMBLEDON CHASE STATION**

312 Kingston Road • Wimbledon SW20 8LX • [info@tennisonproperty.com](mailto:info@tennisonproperty.com) • [tennisonproperty.com](http://tennisonproperty.com)